


## U.S.S. Monitor Steam Engine

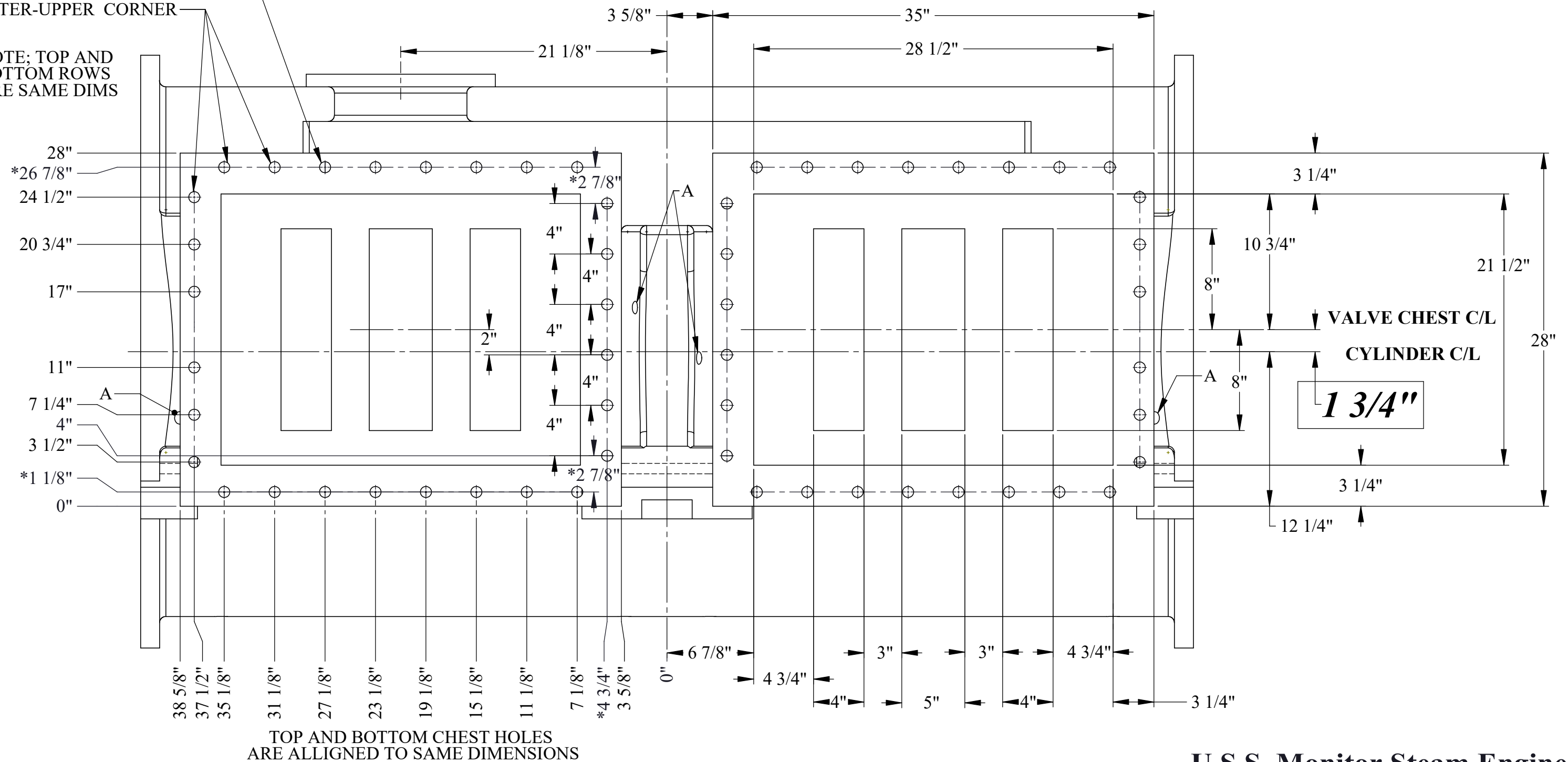
 <p>* Revised 3-31-2022 See Sheet 2 RWC</p> <p>© 2018 R.W.Carlstedt</p>	Material Cast Iron	Drawn By - Date RWC 12-2018	Sub-Assembly Cylinder Assembly
	Weight (Lbs) 5081.894	<div> <div>Description</div> <div>Cylinder</div> <div>SHEET 1 OF 4</div> </div>	
	Scale 1:16		
	Part # C 2		

# Cylinder

NOTE : 25 - 7/8 DIA. "THREADED  
HOLES 1-1/2" DP. AS SHOWN

NOTE: 7/8 " THRU HOLES  
3-ONLY-AS SHOWN IN  
OUTER-UPPER CORNER

NOTE; TOP AND  
BOTTOM ROWS  
ARE SAME DIMS



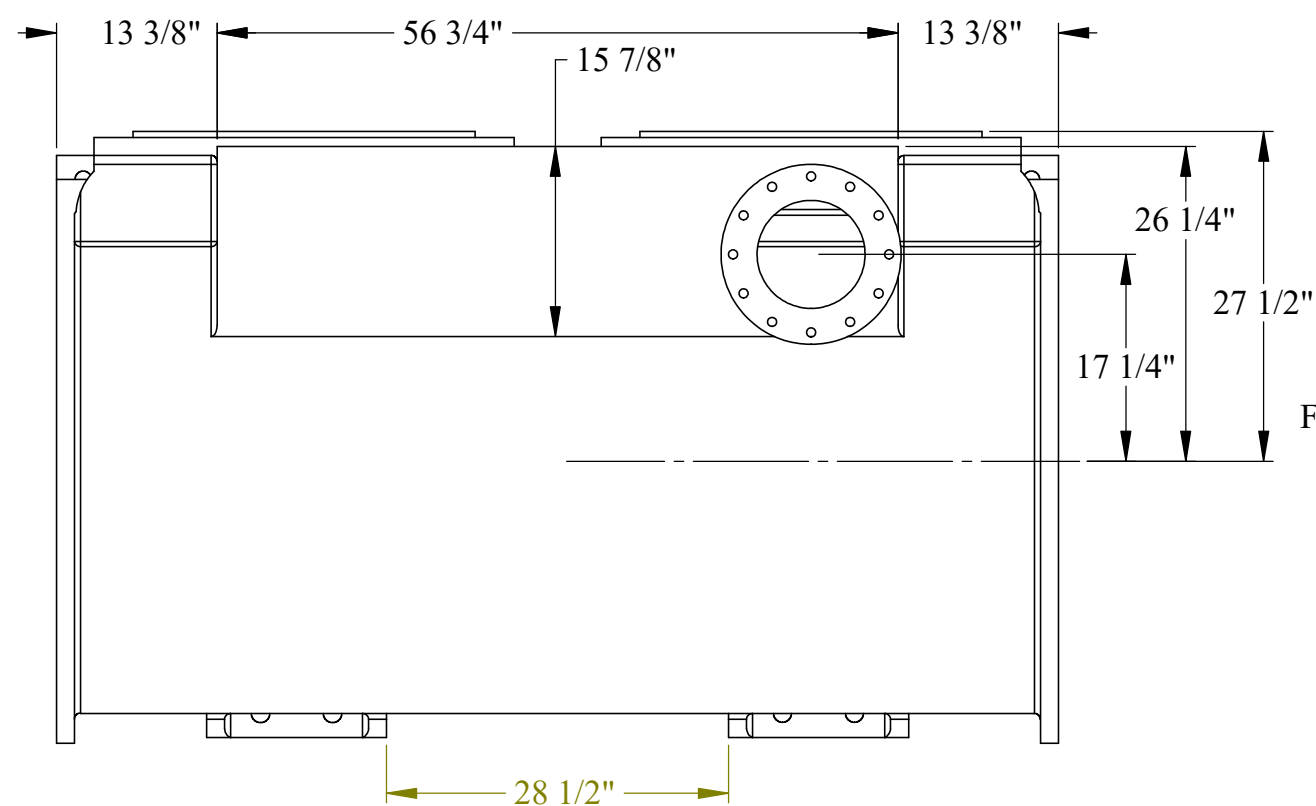
**NOTE: -A-**  
4- 1 " THREADED HOLES  
USED FOR INDICATOR  
COCKS -THRU TO INTAKE  
STEAM PASSAGEWAY  
NO DETAILS

## VALVE FACE AND HOLE DETAILS

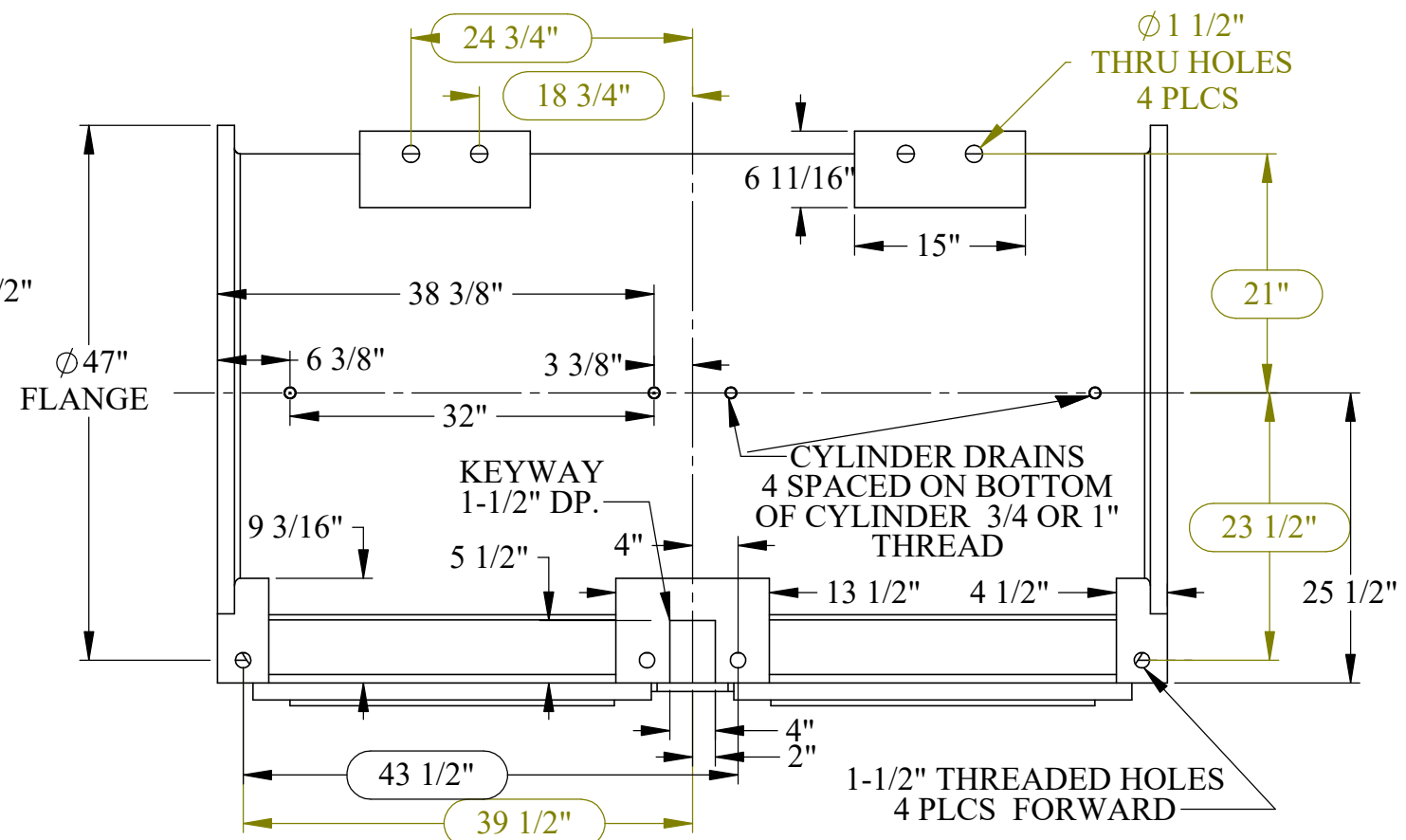
## U.S.S. Monitor Steam Engine

	Material Cast Iron	Drawn By - Date RWC 10-2018	Sub-Assembly Cylinder Assembly
* Revised 3-31-2022 RWC	Weight (Lbs) 5081.894 Scale 1:8	<div style="text-align: center;"> <h1>Cylinder</h1> <h2>SHEET 2 OF 4</h2> </div>	
© 2018 R.W.Carlstedt	Part # <b>C 2</b>		

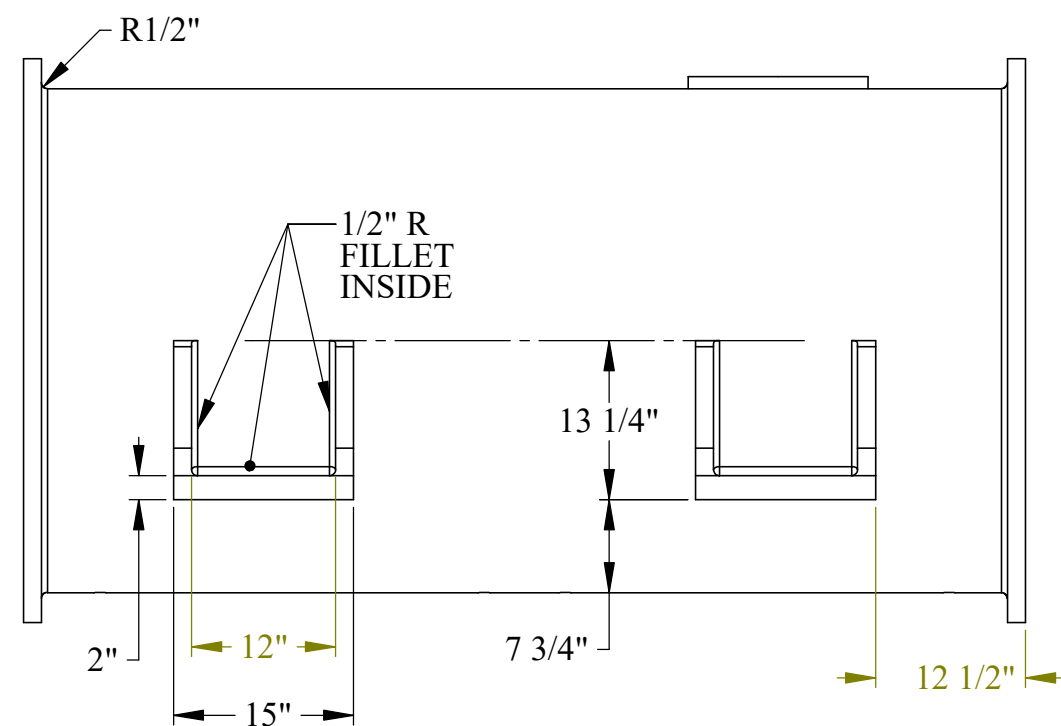
# Cylinder



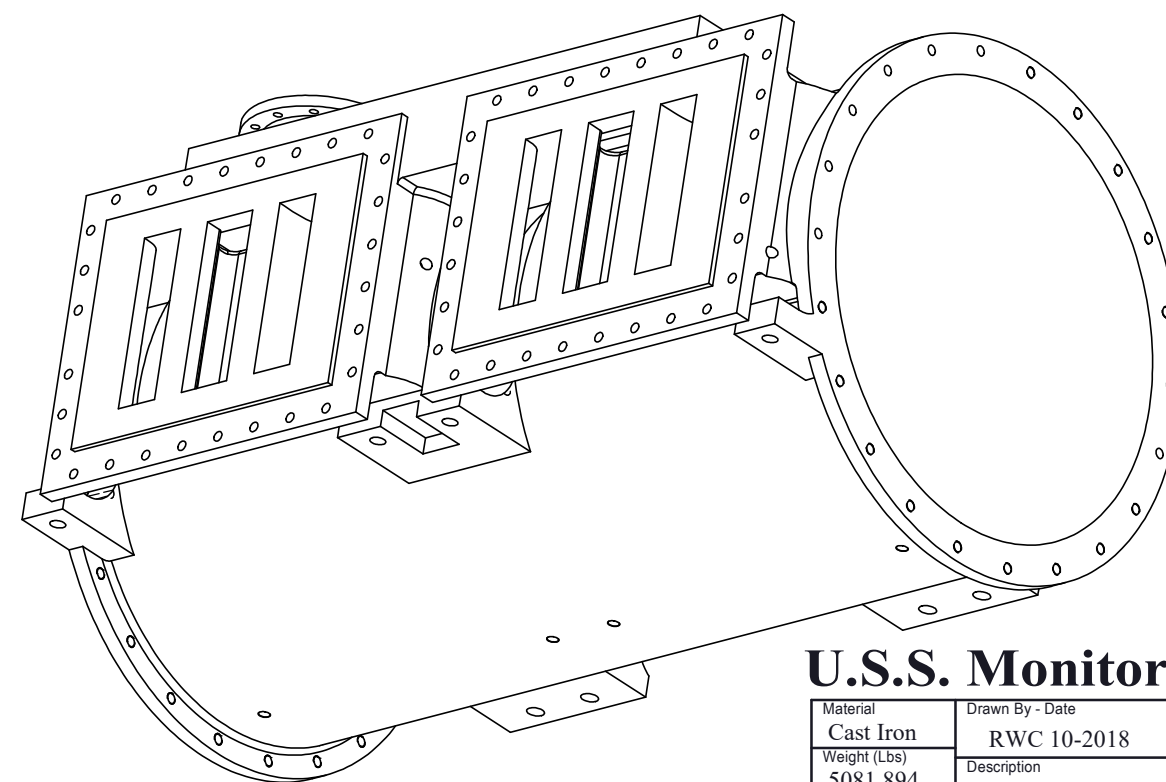
TOP VIEW



BOTTOM VIEW-CYLINDER MOUNTS AND KEYWAY



VIEW FROM AFT

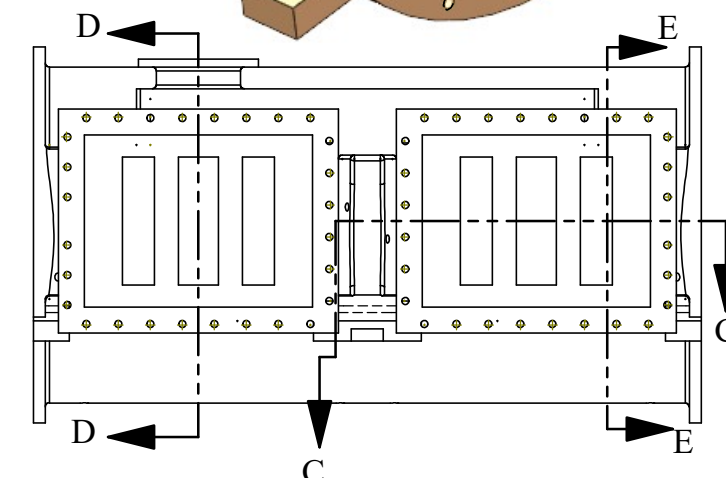
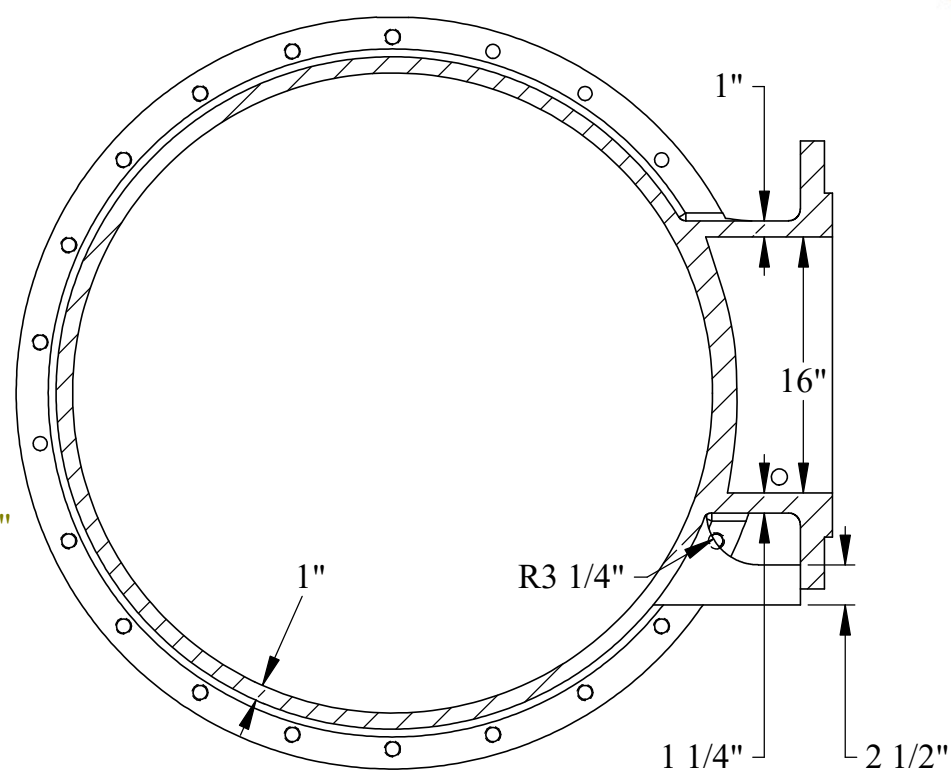
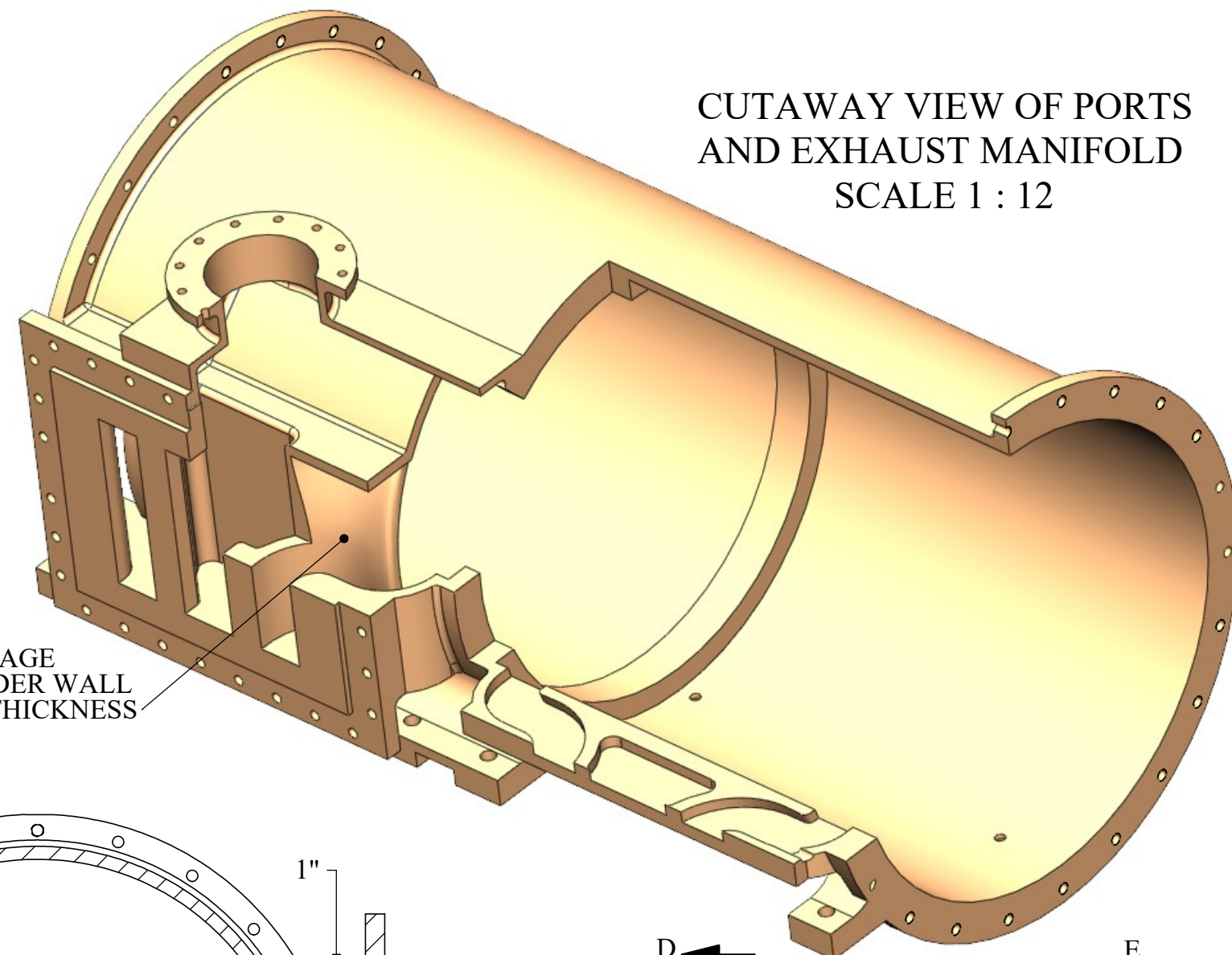
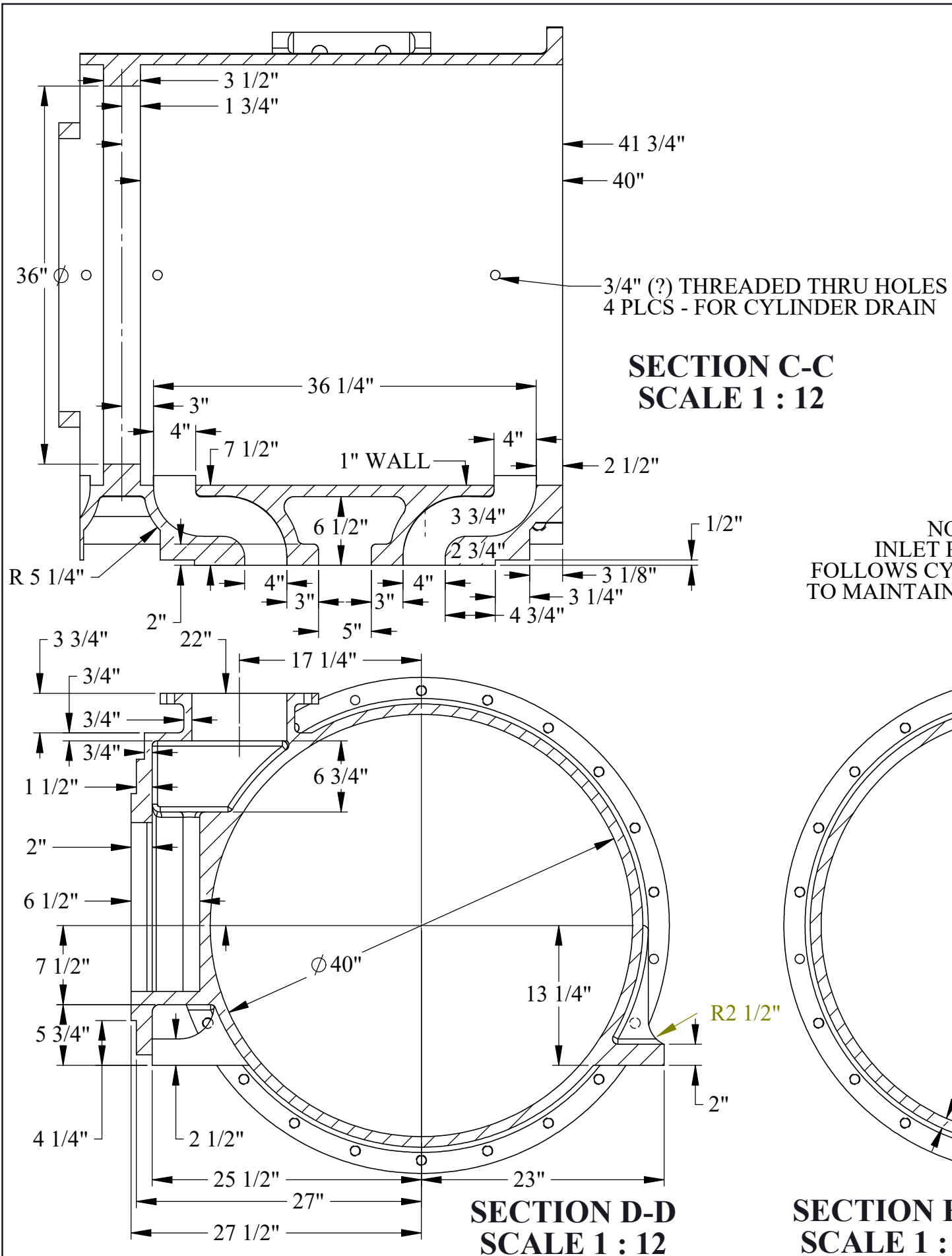


**U.S.S. Monitor Steam Engine**

Material Cast Iron	Drawn By - Date RWC 10-2018	Sub-Assembly Cylinder Assembly
Weight (Lbs) 5081.894	Description <b>Cylinder</b>	
Scale 1:16		
Part # <b>C 2</b>		

© 2018 R.W.Carlstedt

SHEET 3 OF 4



# U.S.S. Monitor Steam Engine

Material Cast Iron	Drawn By - Date RWC 10-2018	Sub-Assembly Cylinder Assembly
Weight (Lbs) 5081.894	Description	
Scale 1:24		
Part # C 2		

**Cylinder**

SHEET 4 OF 4

© 2018 R.W.Carlstedt